

Office

1541 S. BDWY
Minot, ND 58701

2 Lots in Busy SW Minot
SE Corner of 7th St SW & 37th Ave SW

SIGNAL
Realtors
(701)852-3505



FOR SALE

2 Lots
Zoned C2

Lot 1: \$900,000 Sale Price
2.61 Acres
289'x393'
Lot 2: \$850,000 Sale Price
2.41 Acres
271'x393'



Kristen Boen
701.340.5592
Duane Peterson
701.240.3660
Real Estate Professionals

www.minotcommercial.com

Office

1541 S. BDWY
Minot, ND 58701

2 Lots in Busy SW Minot

SE Corner of 7th St SW & 37th Ave SW

SIGNAL
Realtors
(701)852-3505



Two commercial lots available on the south side of 37th Ave in southwest Minot. Located directly west of Walmart and within a block of 4 existing hotels, each of these 2.4+ acre lots features access to city water and sewer, electricity and natural gas nearby. Great location for retail strip, commercial, restaurant, and much more. 7th St SW completed by seller along with water and sewer stubbed into lot.



Kristen Boen
701.340.5592
Duane Peterson
701.240.3660
Real Estate Professionals

www.minotcommercial.com

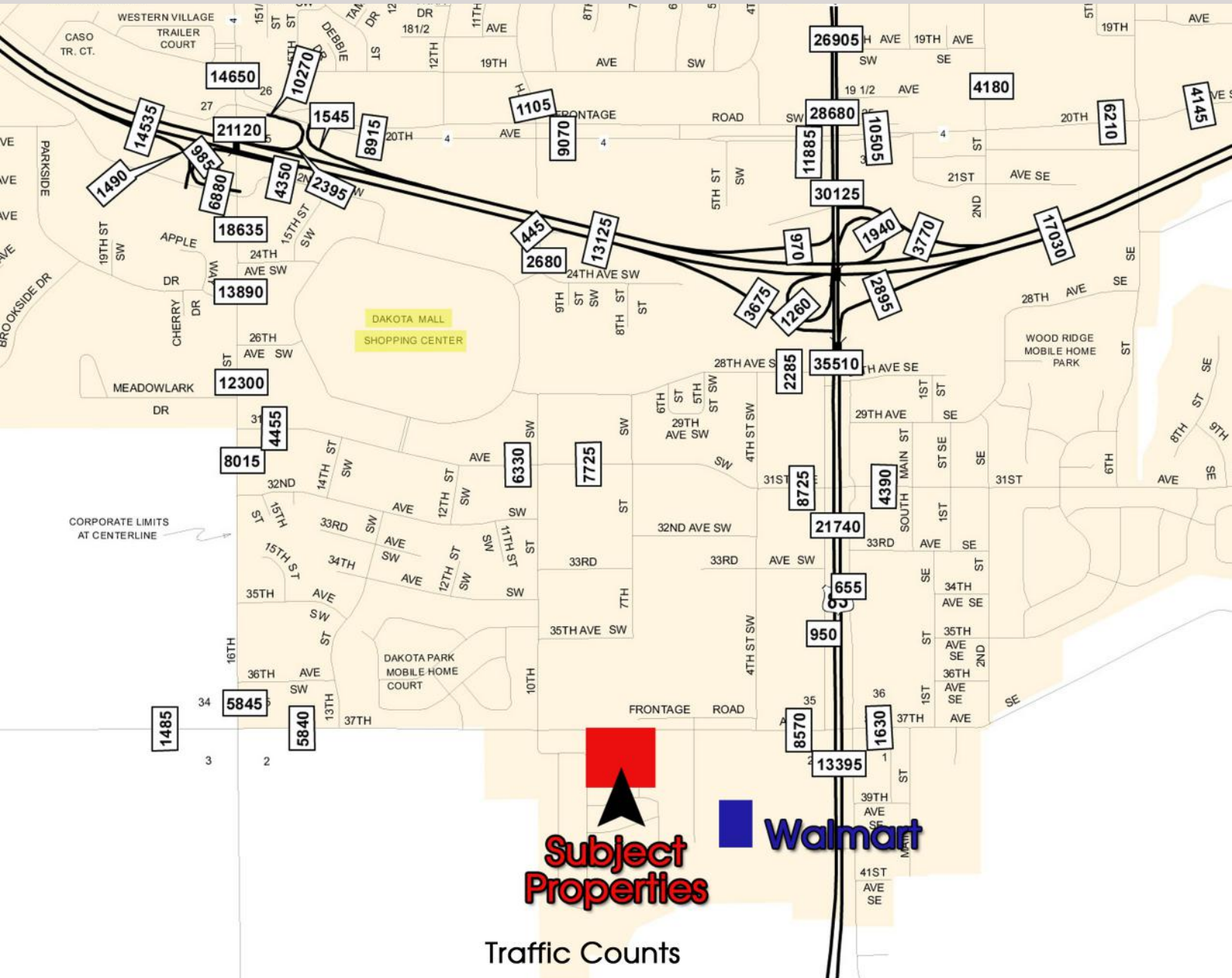
Office

1541 S. BDWY
Minot, ND 58701

2 Lots in Busy SW Minot

SE Corner of 7th St SW & 37th Ave SW

SIGNAL
Realtors
(701)852-3505



Subject Properties



Traffic Counts



Kristen Boen
701.340.5592
Duane Peterson
701.240.3660
Real Estate Professionals

