

1011 SE 20th Ave  
Minot, ND 58701

**Noble Inn Lot**

**BOUNDARIES**

- City Limits
- 2 Mile Properties
- Parcels

**PARCIS & RBO**

- Park

**STREETS**

- Roof\_Centerline

**TRANSPORTATION**

- Highway

**HYDROLOGY**

- Water

Map details: The map shows a grid of parcels. A large blue area is labeled '1009'. Other parcels are labeled with numbers: 804, 805, 806, 807, 808, 809, 810, 811, 812, 813, 814, 815, 816, 817, 818, 819, 820, 821, 822, 823, 824, 825, 826, 827, 828, 829, 830, 831, 832, 833, 834, 835, 836, 837, 838, 839, 840, 841, 842, 843, 844, 845, 846, 847, 848, 849, 850, 851, 852, 853, 854, 855, 856, 857, 858, 859, 860, 861, 862, 863, 864, 865, 866, 867, 868, 869, 870, 871, 872, 873, 874, 875, 876, 877, 878, 879, 880, 881, 882, 883, 884, 885, 886, 887, 888, 889, 890, 891, 892, 893, 894, 895, 896, 897, 898, 899, 900, 901, 902, 903, 904, 905, 906, 907, 908, 909, 910, 911, 912, 913, 914, 915, 916, 917, 918, 919, 920, 921, 922, 923, 924, 925, 926, 927, 928, 929, 930, 931, 932, 933, 934, 935, 936, 937, 938, 939, 940, 941, 942, 943, 944, 945, 946, 947, 948, 949, 950, 951, 952, 953, 954, 955, 956, 957, 958, 959, 960, 961, 962, 963, 964, 965, 966, 967, 968, 969, 970, 971, 972, 973, 974, 975, 976, 977, 978, 979, 980, 981, 982, 983, 984, 985, 986, 987, 988, 989, 990, 991, 992, 993, 994, 995, 996, 997, 998, 999, 1000. The map also shows a river (blue) and a highway (yellow line). The map is titled 'Noble Inn Lot'.

(701) 340-5592  
(701) 240-3660

**SIGNAL**  
*Realtors*  
(701) 852-3505

# Over 2 Acres in South Minot

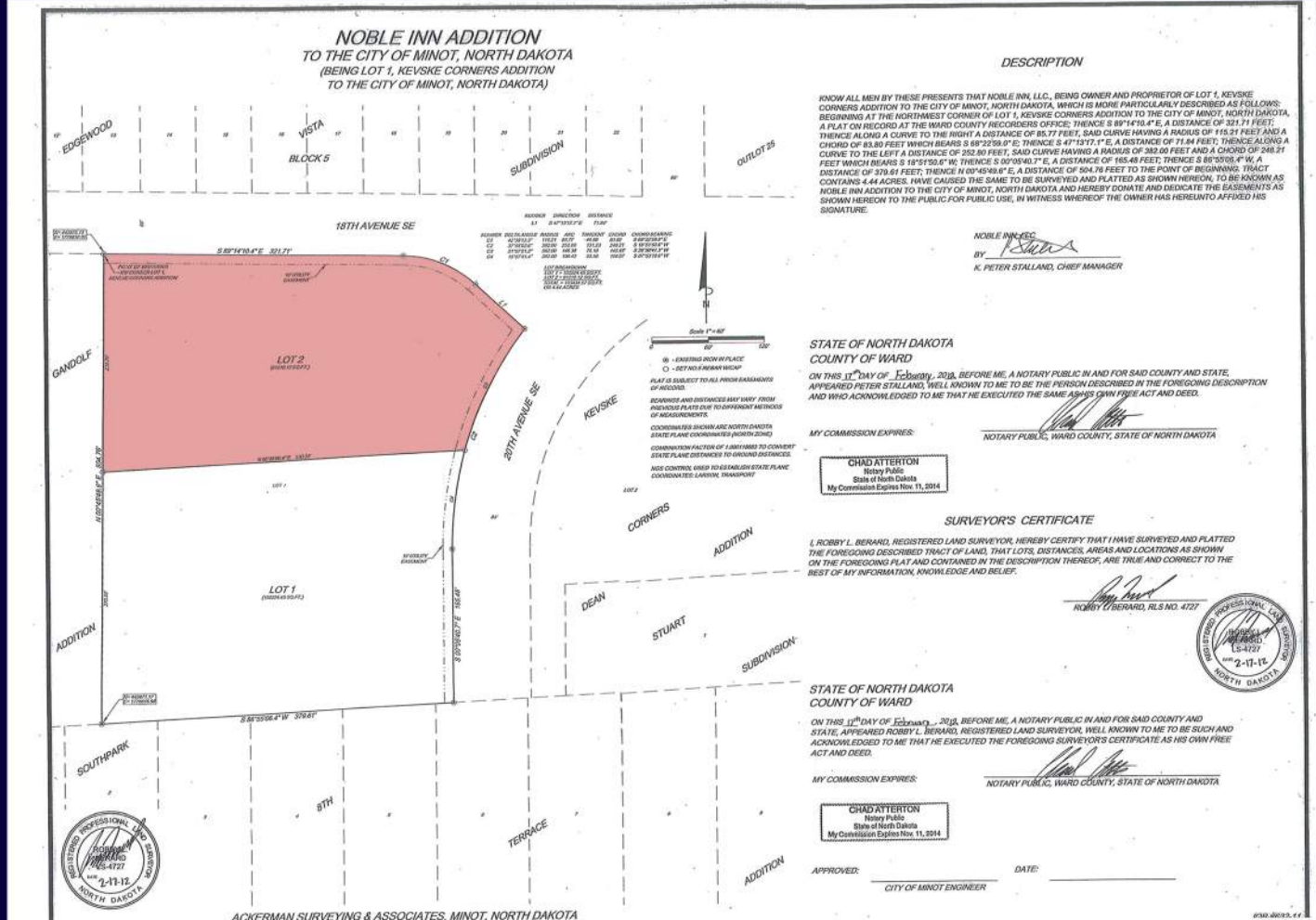
1011 SE 20th Ave  
Minot, ND 58701

- \$550,000 sale price
- 2.09 Acres
- Zoned C-2
- Desirable location
- City water and sewer available



# Over 2 Acres in South Minot

1011 SE 20th Ave  
Minot, ND 58701



www.minotcommercial.com

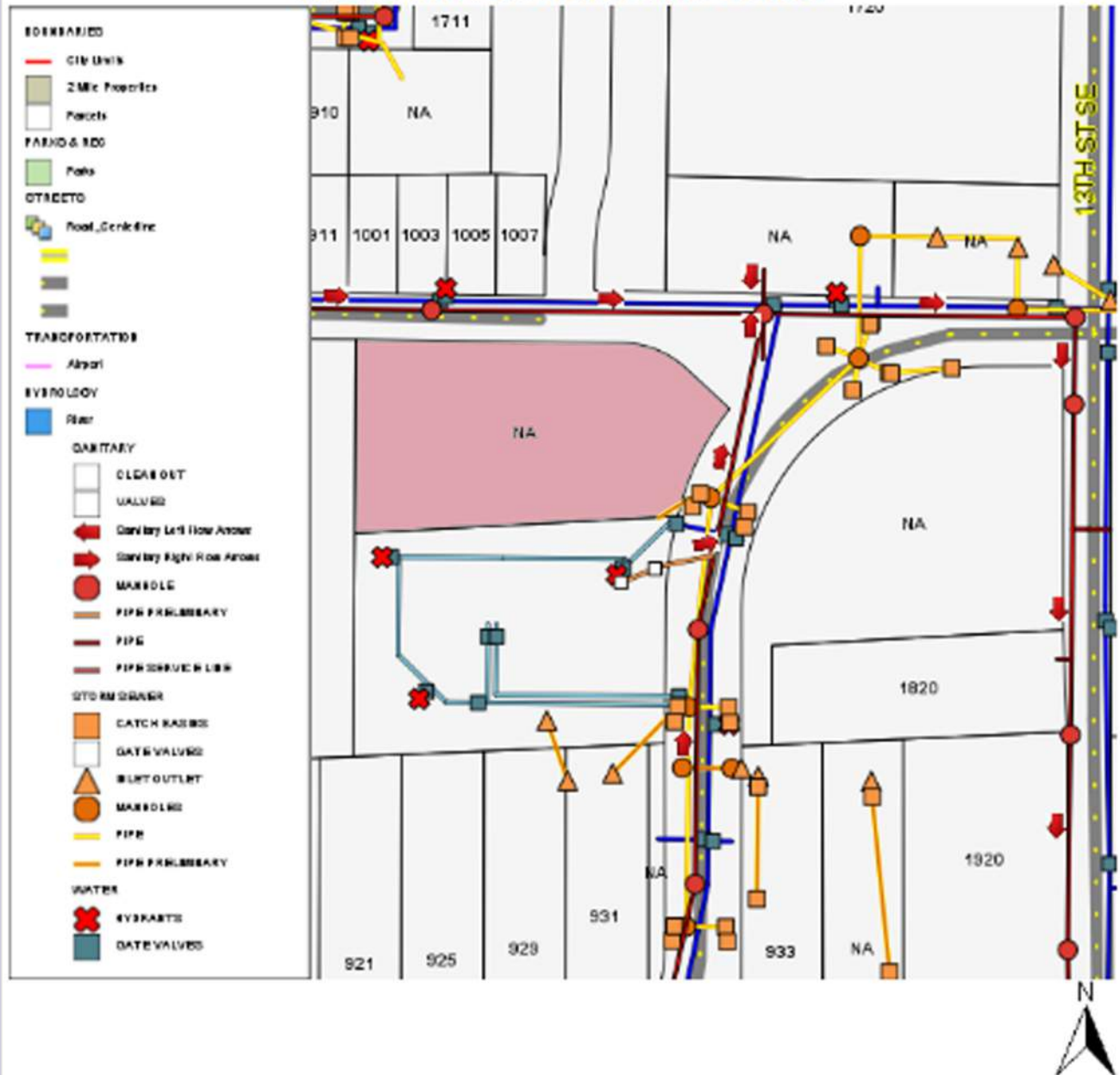
**SIGNAL**  
*Realtors*  
(701) 852-3505



# Over 2 Acres in South Minot

1011 SE 20th Ave  
Minot, ND 58701

## Noble Inn Lot Water and Sewer



[www.minotcommercial.com](http://www.minotcommercial.com)

**SIGNAL**  
*Realtors*  
(701) 852-3505



Duane Peterson  
701-240-3660  
[info@minotcommercial.com](mailto:info@minotcommercial.com)



Kristen Boen  
701-340-5592  
[info@minotcommercial.com](mailto:info@minotcommercial.com)

Your team of commercial experts in Minot, ND and the surrounding area specializing in commercial and industrial real estate. Experience includes land parcels of any size for residential, commercial, retail and industrial developments.

**SIGNAL**  
*Realtors*  
(701) 852-3505

[www.minotcommercial.com](http://www.minotcommercial.com)