

Lakeside Lots

3 Lots Available

Corner of 16th St NW and 21st Ave NW
Minot, ND



Kristen Boen
Duane Peterson
Real Estate Professionals

(701) 340-5592
(701) 240-3660

www.minotcommercial.com

SIGNAL
Realtors
(701) 852-3505

Lakeside Lots

Lot 1

Corner of 16th Street NW and 21st Avenue NW
Minot, ND

- \$1,289,000

- 1.91 Acres

- East of Marketplace Foods in
NW Minot

- Corner Lot

- Zoned C2

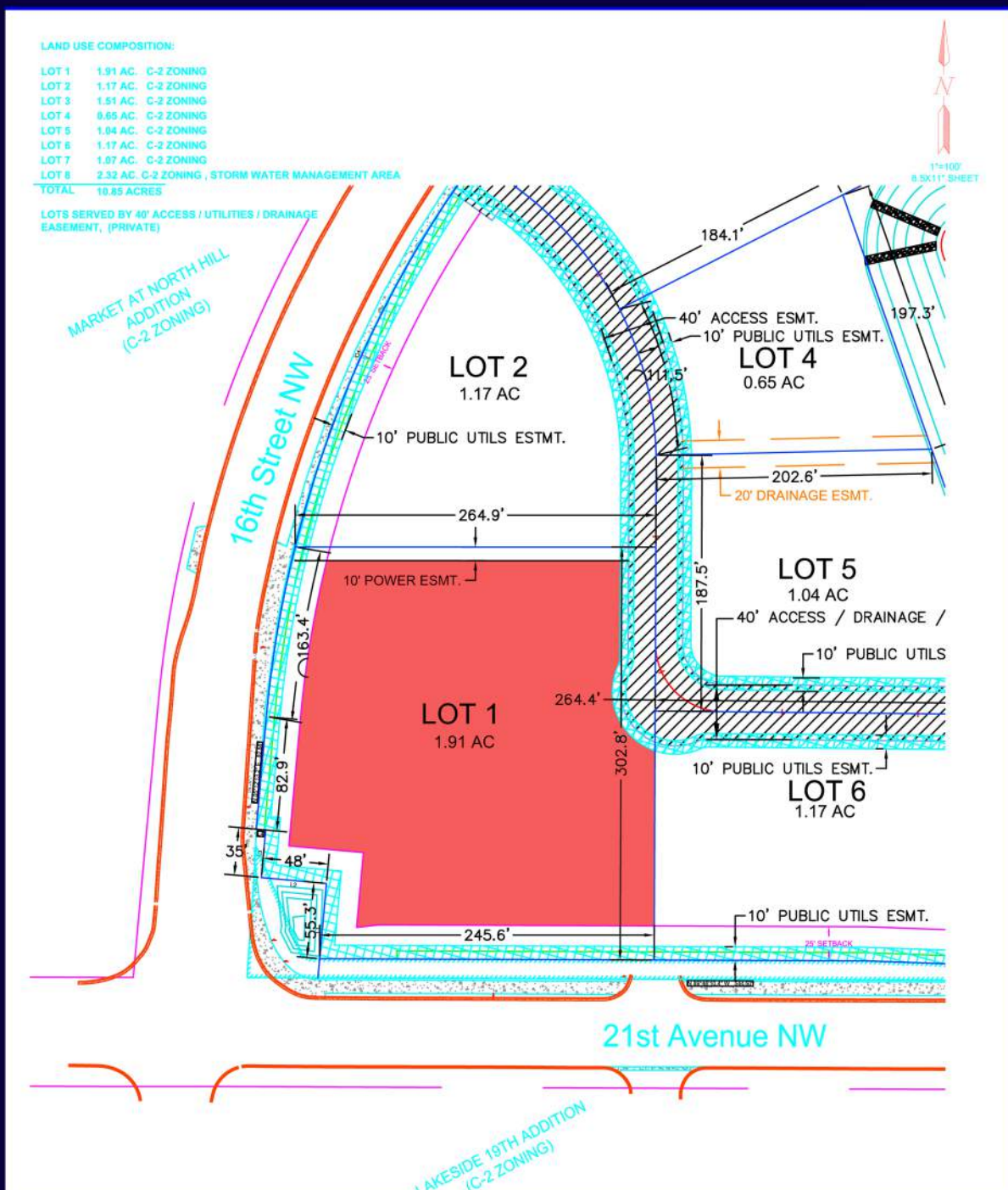
- Planned Lighted Intersection
on corner

- MLS#142830



Lakeside Lots

Corner of 16th Street NW and 21st Avenue NW
Minot, ND



www.minotcommercial.com

SIGNAL
Realtors
(701) 852-3505

Lakeside Lots

Lot 4

Corner of 16th Street NW and 21st Avenue NW
Minot, ND

-\$384,600

-.65 Acres

-East of Marketplace Foods in
NW Minot

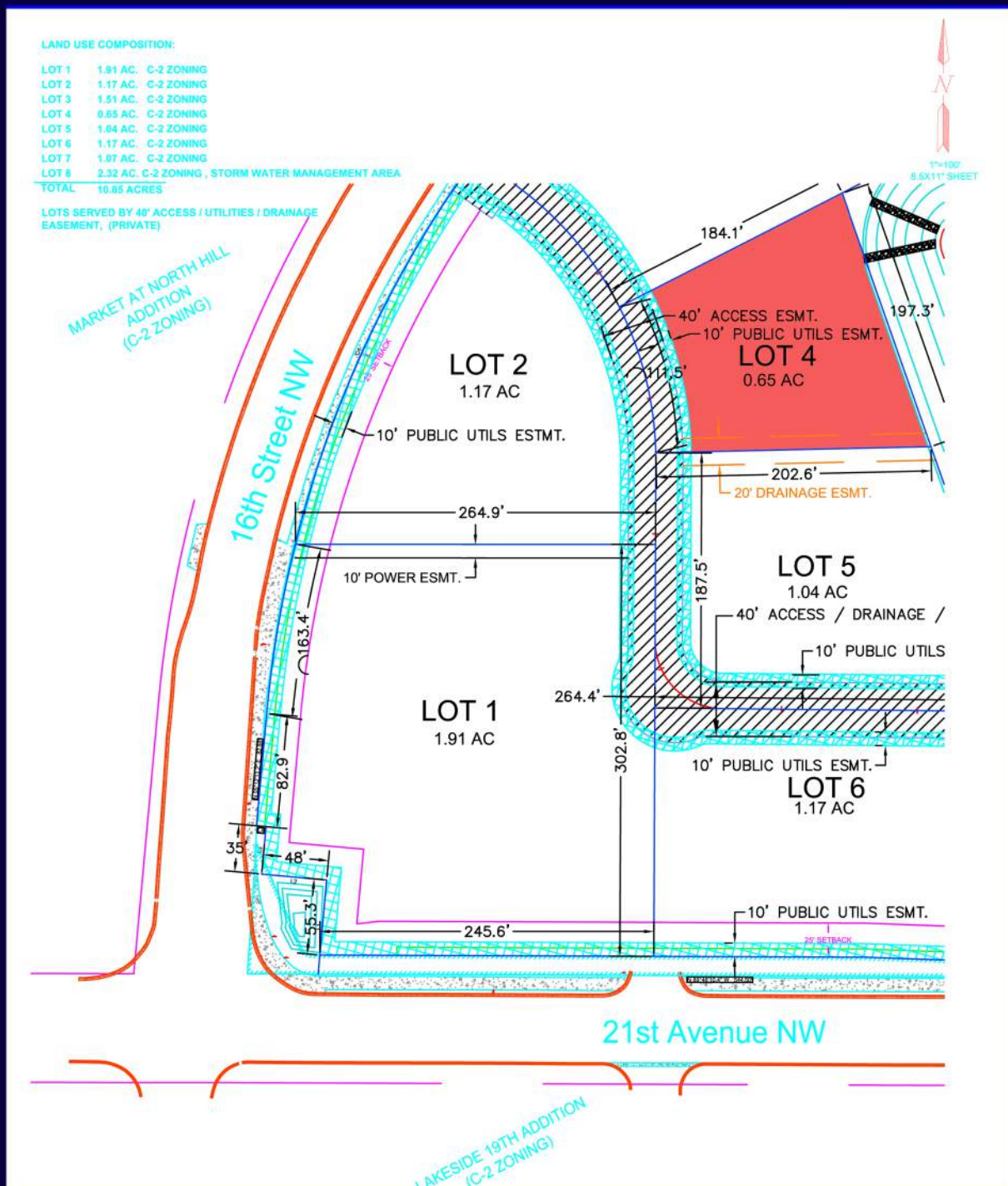
-Interior Lot

-Zoned C2

-MLS#142828



Corner of 16th Street NW and 21st Avenue NW
Minot, ND



Lakeside Lots

Lot 5

Corner of 16th Street NW and 21st Avenue NW
Minot, ND

- \$611,200

- 1.04 Acres

- East of Marketplace Foods in
NW Minot

- Interior Lot

- Zoned C2

- MLS#142829



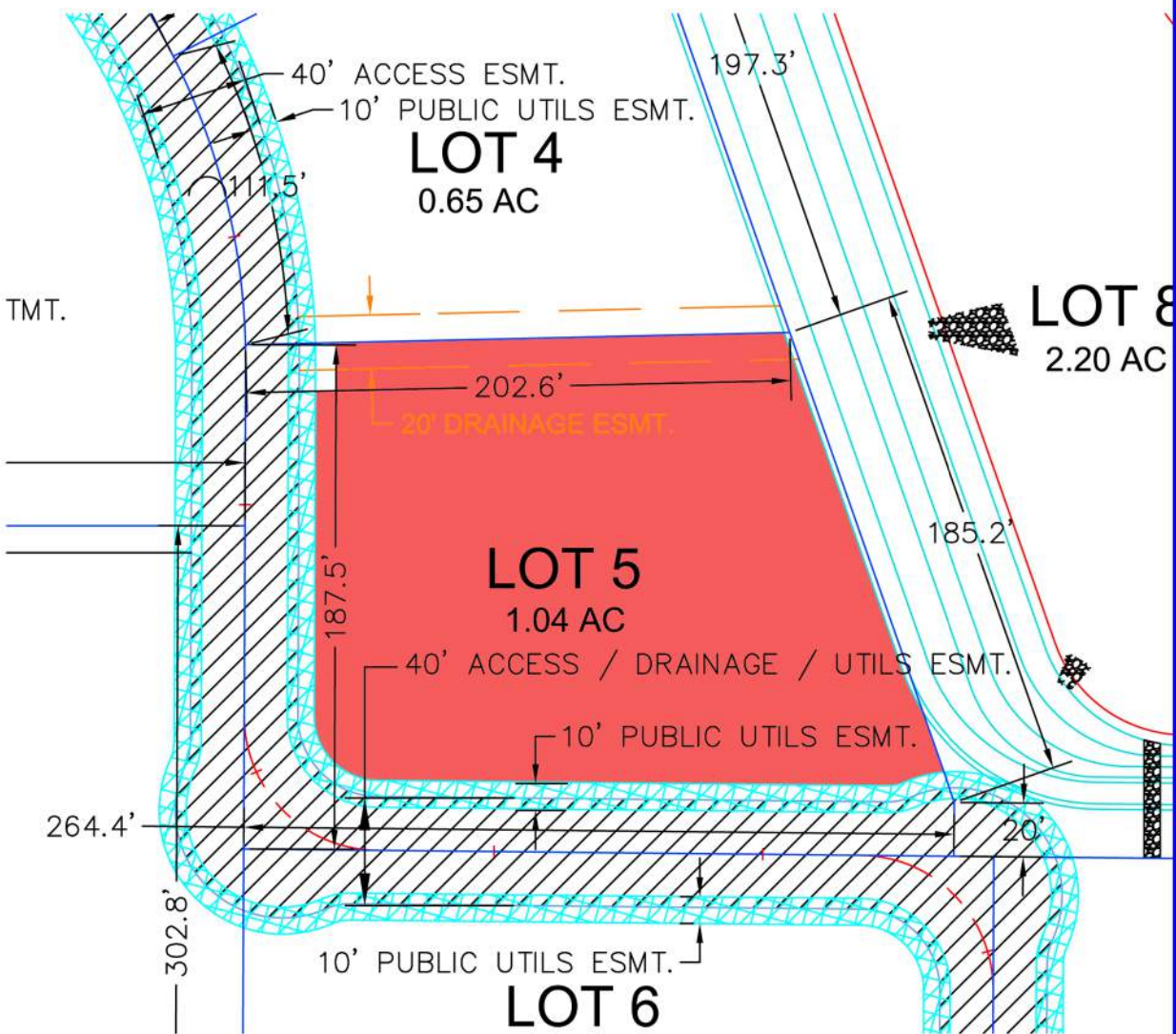
Lakeside Lots

Corner of 16th Street NW and 21st Avenue NW
Minot, ND

LAND USE COMPOSITION:

LOT 1	1.91 AC.	C-2 ZONING
LOT 2	1.17 AC.	C-2 ZONING
LOT 3	1.51 AC.	C-2 ZONING
LOT 4	0.65 AC.	C-2 ZONING
LOT 5	1.04 AC.	C-2 ZONING
LOT 6	1.17 AC.	C-2 ZONING
LOT 7	1.87 AC.	C-2 ZONING
LOT 8	2.32 AC.	C-2 ZONING, STORM WATER MANAGEMENT AREA
TOTAL	10.85 ACRES	

LOTS SERVED BY 40' ACCESS / UTILITIES / DRAINAGE
EASEMENT, (PRIVATE)

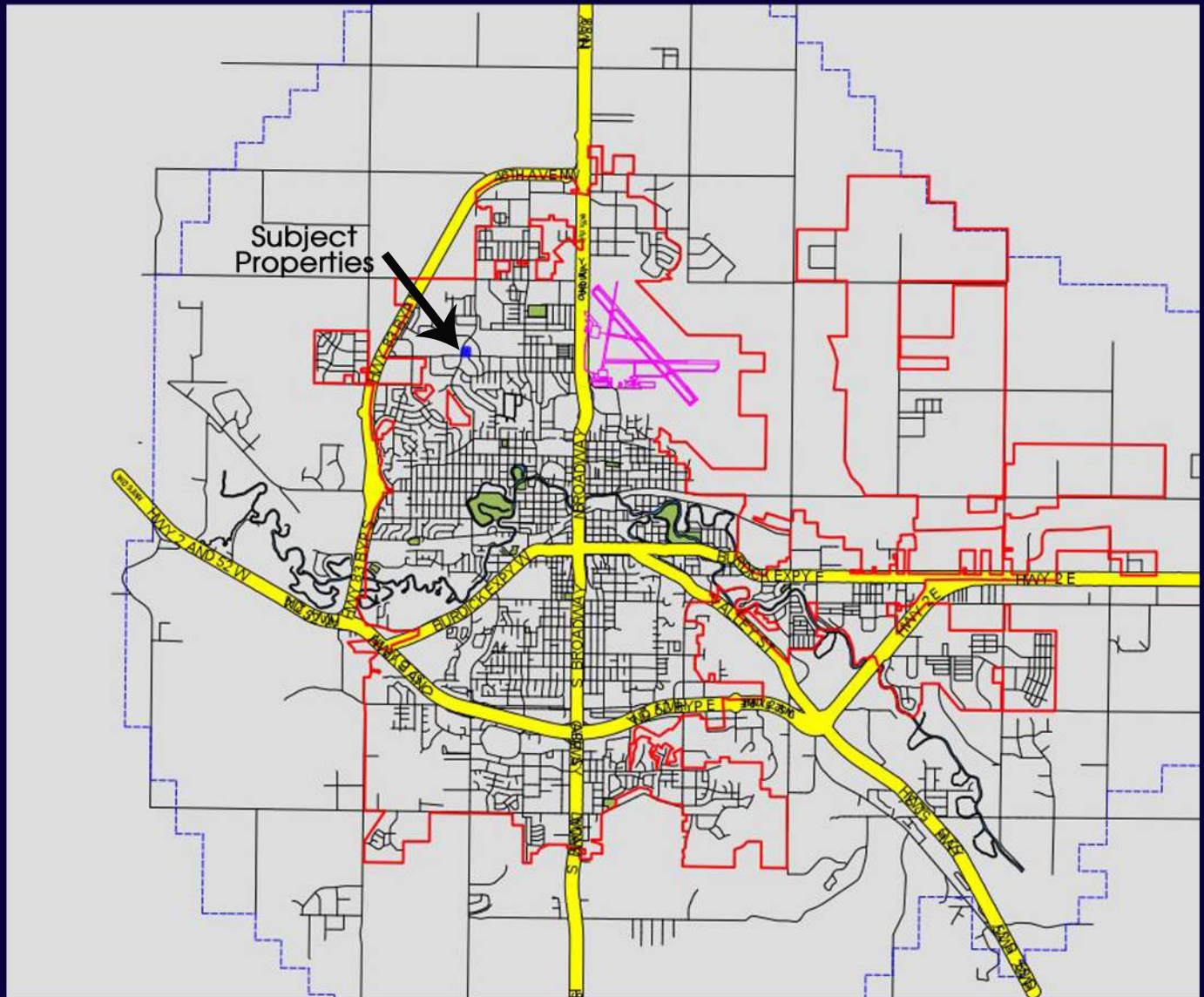


www.minotcommercial.com

SIGNAL
Realtors
(701) 852-3505

Lakeside Lots

Corner of 16th Street NW and 21st Avenue NW
Minot, ND

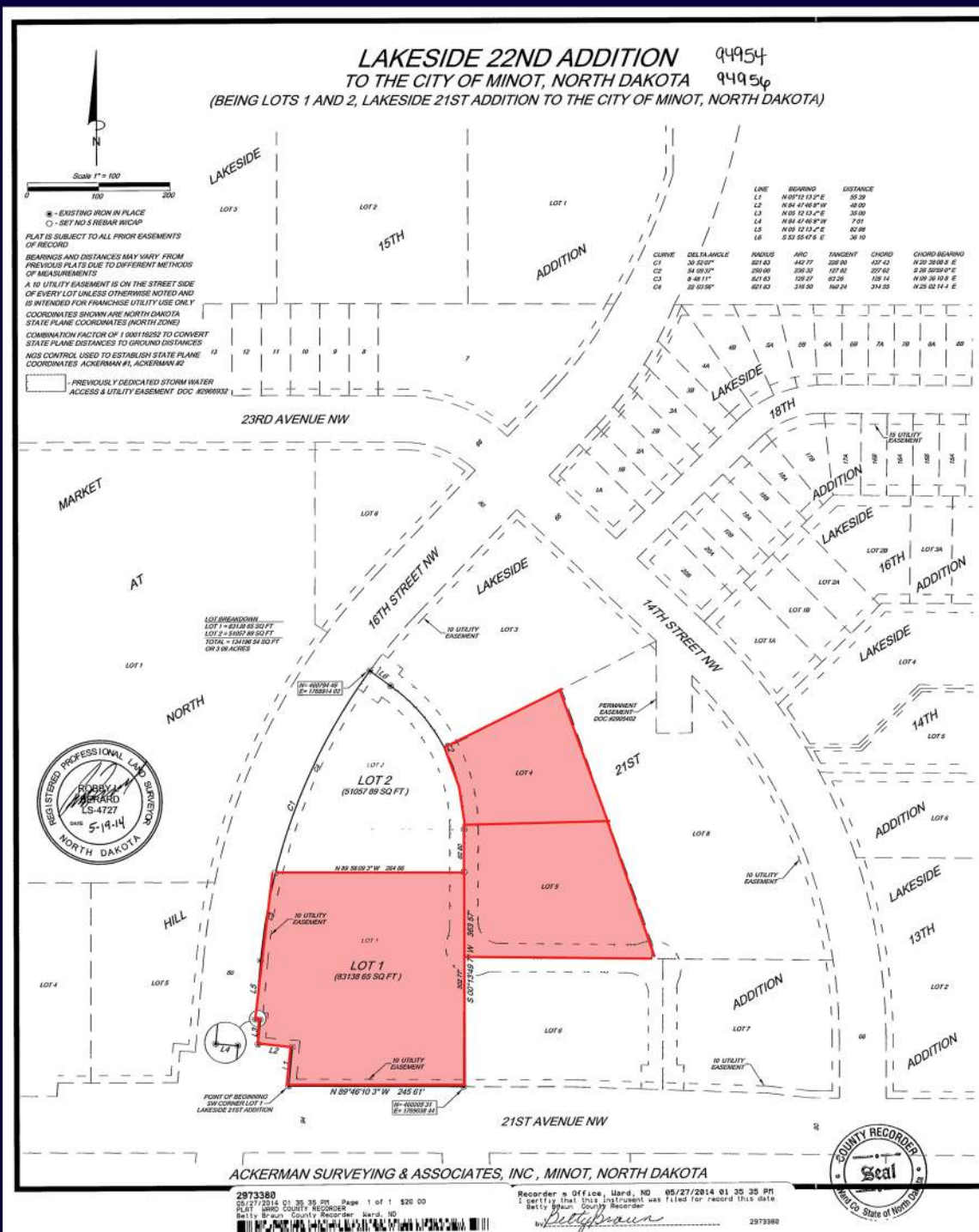


www.minotcommercial.com

SIGNAL
Realtors
(701) 852-3505

Lakeside Lots

Corner of 16th Street NW and 21st Avenue NW
Minot, ND



www.minotcommercial.com

SIGNAL
Realtors
(701) 852-3505



Duane Peterson
701-240-3660
info@minotcommercial.com



Kristen Boen
701-340-5592
info@minotcommercial.com

Your team of commercial experts in Minot, ND and the surrounding area specializing in commercial and industrial real estate. Experience includes land parcels of any size for residential, commercial, retail and industrial developments.

SIGNAL
Realtors
(701) 852-3505

www.minotcommercial.com